

ABBNEY DLD  
GROUP OF COLLEGES  
CAMBRIDGE • LONDON • MANCHESTER



ACCESS **YOUR** FUTURE

INTERNATIONAL PROSPECTUS 2021/22





# CONTENTS

Welcome	3
5 Reasons to Study at Abbey DLD	6
2020 Results & Destinations Highlights	7
Whats Included?	9
Boarding at Abbey DLD	11
Courses & Subjects	14
GCSE	15
A Level	21
International Foundation Programme	27
BTEC	33
Academic Studies with Football/Basketball Training	37
Pre-Sessional/Academic Preparation Course	41
British Boarding School Experience (BBSE)	43
Study Support	45
Outstanding Colleges, Outstanding Locations	49
Cambridge	51
Abbey College Cambridge	57
London	65
DLD College London	71
Manchester	79
Abbey College Manchester	85
Student Destinations 2020	93
Term Dates and Fees 2021/22	107
Boarding Fees	111
Apply Now	113





# WELCOME

**"Thank you for considering us for your studies, Each of our three colleges has their own unique personality, but they are united by a set of common goals. At Abbey DLD we strive to achieve the highest academic standards whilst providing a welcoming, safe, high quality learning and boarding experience for students from around the world."**

As part of the Alpha Plus Group, the UK's largest and most successful independent education provider, our colleges are proud to provide the 'gold standard' of education. This means you can rest assured that your studies will be guided by our principles of strong leadership, governance and high quality teaching, and you will benefit from our many years' of experience of helping international students to achieve their best.

So I invite you read on and learn more about our three fantastic colleges, they are special places, where international students and passionate teachers come together to achieve academic success and personal growth. You are at the start of an exciting journey, and we would very much like for one of our colleges to provide your bridge to university and beyond.

**Mark Hanley-Browne**

CEO, Alpha Plus Group







**“I HAVE NEVER KNOWN  
SUCH A SUPPORTIVE  
ENVIRONMENT.”**

**Agustin from Uruguay**

A Level student, now studying Natural Sciences  
at the University of Cambridge.

# 5 REASONS TO STUDY AT ABBHEY DLD



## 1. EXPERTS IN INTERNATIONAL STUDY

Our colleges have many years' experience of teaching and supporting international students. This means that we can create personalised learning plans and work closely with our students to achieve their academic and personal goals.



## 2. ELITE TEACHERS

Our teachers are experienced, full time professionals, experts in their fields who know the curriculum inside and out. We only select teachers who share our passion to work with international students.



## 3. TOP-RANKED RESULTS AND DESTINATIONS

Across a wide range of programmes, our students' results stand up against the best in the country. We take pride in the fact that the majority of our students progress to top ranked universities.



## 4. 5\* URBAN BOARDING

We know how important it is to feel at home whilst you study. That's why our college boarding facilities have some of the highest specifications you will find, with luxury, safety and comfort our priorities.

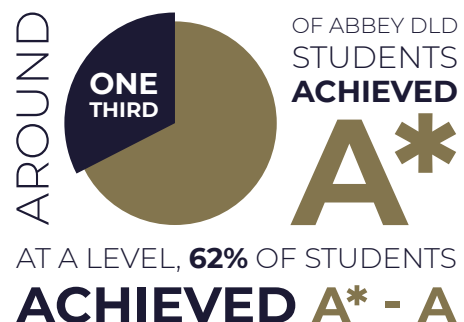


## 5. GAIN EXPERIENCE OUTSIDE OF YOUR STUDIES

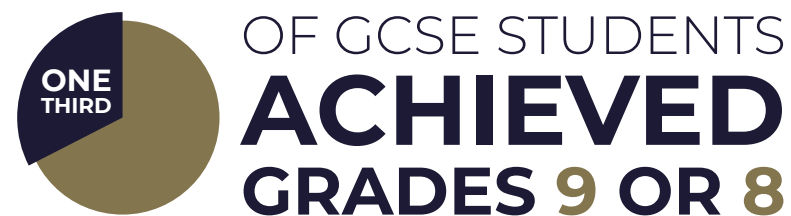
Our colleges all offer a wide range of after school and weekend clubs and activities, many of which are inclusive of fees. We believe that students should gain a wide range of experiences outside of their studies and fully experience UK culture and life.



# 2020 RESULTS AND DESTINATIONS HIGHLIGHTS



OVER **70%** AVERAGE SCORE,  
**INTERNATIONAL**  
FOUNDATION PROGRAMME



**4**  
STUDENTS PROGRESSED TO  
**OXBRIDGE**

**30%**  
OF STUDENTS JOINED A  
**G5 UNIVERSITY**

**50%**  
OF STUDENTS PROGRESSED TO A  
**TOP 10 RANKED  
UK UNIVERSITY**



**“MY TEACHERS KNEW THAT I ASPIRED TO STUDY AT A TOP UNIVERSITY, AND THEY TOLD ME ABOUT EVENTS OUTSIDE OF SCHOOL THAT WOULD HELP MY PERSONAL STATEMENT. I THINK THEY REALLY HELPED STRENGTHEN MY APPLICATION.”**

Monica from Cambodia

A Level student now studying Management at the London School of Economics and Political Science.



# WHATS INCLUDED?



CONFIRMATION OF  
**ACCEPTANCE**  
FOR STUDIES [CAS]

ACADEMIC ENGLISH  
**ADMISSIONS TEST**



**APPLICATION**  
AND SUPPORT

**AFTER SCHOOL AND  
WEEKEND CLUBS  
AND ACTIVITIES**



**NATIVE  
LANGUAGE**  
A LEVEL SUPPORT  
AND EXAM ENTRY

UCAS AND  
**UNIVERSITY**  
APPLICATION SUPPORT



**INDUCTION**  
PROGRAMME

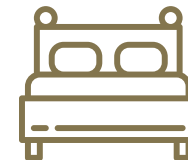


**TEXTBOOKS**



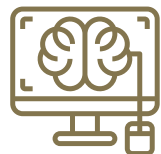
**PERSONAL  
TUTORS**

**ACCOMMODATION**  
DURING HALF-TERM  
AND EASTER HOLIDAYS



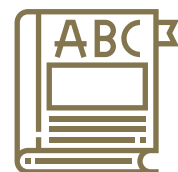
**SPECIAL  
EDUCATIONAL NEEDS  
SUPPORT**

**ENTRANCE**  
TO ACADEMIC CHALLENGES  
AND COMPETITIONS



STUDENT EMAIL ACCOUNT  
AND ACCESS TO  
**LEARNING  
SOFTWARE**

**WIFI ACCESS**  
IN COLLEGE AND  
BOARDING HOUSES



**ACADEMIC  
ENGLISH**

**PUBLIC EXAM  
ENTRANCE FEES**



**SPECIALIST  
UNIVERSITY APPLICATION  
PREPARATION**

SUBJECT RELATED  
**TRIPS**



When you apply to study at an Abbey DLD College the following resources and services are included in your fees.





# BOARDING AT ABBEY DLD

**We know how important it is to have a place to call your own whilst you study, and that is why we have invested to provide our students with some of the best quality accommodation found at any UK boarding school.**

Our student bedrooms are designed to offer a quiet haven where students can relax and study. We offer a range of different room options, but all come with features such as wifi, study desks, ample clothes and book storage as standard.

Outside of your room, we offer communal areas to meet with friends, socialise and study. Our common rooms feature well-equipped kitchens, lounges, and games facilities.

Our live-in house parents provide 24/7 support and care to students, making sure that they feel well cared for, make friends, and keep on track in their studies.

All of our boarding houses are secure buildings, with controlled access, on-site security and CCTV.







# COURSES AND SUBJECTS

We offer a range of academic programmes for students aged from 13 - 21 years

## COURSES AVAILABLE

COURSE	FOR STUDENTS AGED	AVAILABLE AT	PROGRESS TO
Pre-Sessional   Academic Preparation	13 – 17 years	Cambridge, London	GCSE, A Level, IFP
British Boarding School Experience	14 – 21 years	Cambridge, London, Manchester	Any full course
GCSE	13 – 16 years	Cambridge, London, Manchester	A Level, IFP, BTEC
A Level	16 – 19 years	Cambridge, London, Manchester	Undergraduate course at university
International Foundation Programme (IFP)	17 – 21 years	Cambridge, London, Manchester	Undergraduate course at university
Academic Studies with Football   Basketball Training	14 – 21 years	Manchester	A Level, IFP Undergraduate course at university
BTEC	17 -21 years	London	Undergraduate course at university





# GCSE

General Certificates of Secondary Education (GCSE) represent the first stage on the path to study at a UK university. Many institutions will ask for at least 5 GCSE passes for entry.

## GCSE COURSE DURATION AND START DATES

DURATION	STARTS EVERY	ENGLISH REQUIREMENT (MIN)	AVAILABLE AT
One year	September	IELTS 5.0	Cambridge, London, Manchester
18 month	January	IELTS 4.5	Cambridge, London, Manchester
Two year	September	IELTS 4.5	Cambridge, London, Manchester







**“IT’S A GREAT ENVIRONMENT FOR STUDYING, MY TEACHERS WERE ALWAYS THERE FOR ME, AND HAVE MOTIVATED ME TO DO MY BEST.”**

Amir from Russia  
GCSE student now studying A Levels.



### Why study GCSEs?

Depending on the duration of studies, GCSE students will take between 6-8 subjects. GCSEs provide a great 'grounding', offering students a wide breadth of subjects, time to familiarise themselves with the UK education system and improve their English (English Language is a compulsory GCSE subject). GCSEs also provide a natural pathway to A Levels, and students who have taken them tend to perform better in higher level examinations.

### How are they taught?

GCSE course content is broken up into units, each unit is taught in a linear structure, with an emphasis on understanding the connection between topics within the wider context of the subject.

### Assessment

GCSEs are assessed by an end of course exam. Some subjects will also be assessed by coursework or practical work.

### ABBEY DLD GCSE RESULTS 2020

	GRADE 9	GRADES 9-8	GRADES 9-7	GRADES 9-6	GRADES 9-5
Abbey College Cambridge	27%	47%	72%	85%	100%
DLD College London	12%	29%	45%	64%	81%
Abbey College Manchester	12%	23%	35%	59%	82%
All College Average	17%	33%	51%	69%	88%



# GCSE SUBJECTS

Our colleges offer the following GCSE subjects to choose from:

	CAMBRIDGE	LONDON	MANCHESTER
Art & Design	✓	✓	✓
Arabic			✓ (Exam Only)
Biology	✓	✓	✓
Business Studies	✓	✓	✓
Chemistry	✓	✓	✓
Chinese			✓ (Exam Only)
Economics	✓	✓	
English Literature		✓	
English Language	✓	✓	✓
Further Mathematics	✓		✓
Geography		✓	
German		✓	
History	✓		
Mathematics	✓	✓	✓
Photography			✓
Physics	✓	✓	✓
Religion, Philosophy & Ethics			✓







# A LEVEL

Advanced Level courses, commonly known as ‘A Levels’ are the most widely recognised qualification for entry to UK universities.

## A LEVEL COURSE DURATION AND START DATES

DURATION	STARTS EVERY	AVAILABLE AT
One year	September	London
18 month	January	Cambridge, London, Manchester
Two year	September	Cambridge, London, Manchester
Two & half year	January	Manchester
Three year	September	Manchester







**“I LIKE THAT I AM ABLE TO FOCUS ON THE SUBJECTS THAT INTEREST ME, AND WHICH WILL BE USEFUL FOR MY FUTURE STUDIES. THE TEACHERS’ AIM IS YOUR SUCCESS, & YOU REALLY FEEL THEIR PASSION FOR THEIR SUBJECTS.”**

Yuliia from Ukraine

A Level student now studying Economics and Mathematics at the University of Bristol.



## Why study A Levels?

Most students will take 3 or 4 A Level subjects over the duration of their studies. A Levels offer a good balance between subjects specialisation and choice, allowing students to focus on the subjects that really interest them whilst maintaining breadth of subject choice. A Levels also offer progression the widest range of universities, and are the best options for students looking to join a top-rated university.

## How are they taught?

Course content is divided into different sections, and students are encouraged to develop and understand the links between them. Learning is underpinned by the key concepts of the skills of the subject, with a strong focus on practical real world application.

## Assessment

A Levels have a linear structure, which means that all exams take place at the end of the final year. Most A Level subjects are assessed by written examination unless the course has a large practical element (such as in art or the sciences).

## ABBHEY DLD A LEVEL RESULTS 2020

	A*	A*-A	A*-B	A*-C	A*-D	A*-E
Abbey College Cambridge	45%	83%	98%	100%	100%	100%
DLD College London	23%	50%	76%	94%	100%	100%
Abbey College Manchester	19%	52%	78%	94%	98%	100%
<b>All College Average</b>	<b>29%</b>	<b>62%</b>	<b>84%</b>	<b>96%</b>	<b>99%</b>	<b>100%</b>



# A LEVEL SUBJECTS

We offer the following A Level subjects to choose from across our three colleges:

	CAMBRIDGE	LONDON	MANCHESTER
Accounting	✓		
Art & Design	✓	✓	✓
Arabic	✓ (Exam Only)		✓ (Exam Only)
Biology	✓	✓	✓
Business Studies	✓	✓	✓
Chemistry	✓	✓	✓
Chinese	✓ (Exam Only)	✓ (Exam Only)	✓ (Exam Only)
Classical Civilisation		✓	
Computer Science		✓	
Drama		✓	
Economics	✓	✓	✓ (Subject to Demand)
English Language		✓	✓
English Literature	✓	✓	✓
Film Studies		✓	
French		✓	✓ (Subject to Demand)
Further Mathematics	✓	✓	✓
Geography	✓	✓	✓
German		✓	✓ (Subject to Demand)
Graphic Design		✓	



	CAMBRIDGE	LONDON	MANCHESTER
History	✓	✓	
Italian		✓	
Mathematics	✓	✓	✓
Media Studies		✓	
Music		✓	
Photography		✓	✓
Physics	✓	✓	✓
Politics	✓	✓	
Psychology	✓	✓	✓
Religion, Philosophy & Ethics			✓
Russian	✓ (Exam Only)	✓	✓ (Exam Only)
Sociology		✓	
Spanish		✓	✓





# INTERNATIONAL FOUNDATION PROGRAMME

Our International Foundation Programme (IFP) is an intensive year 13 academic programme that offers international students direct entry to a wide range of UK universities.

## INTERNATIONAL FOUNDATION PROGRAMME COURSE DURATION AND START DATES

DURATION	STARTS EVERY	AVAILABLE AT
One year	September	Cambridge, London, Manchester
Eighteen month	January	Manchester
Two year	September	Manchester







**“STUDYING HERE  
HAS MADE ME  
MORE CONFIDENT,  
AND I FEEL BETTER  
PREPARED FOR  
UNIVERSITY THAN  
I WAS A YEAR AGO.”**

Afreen from India,  
Foundation student now studying  
Medicine at Aston University.

## Why study International Foundation Programme?

Unlike many foundation programmes, our destinations are not limited to a choice of one or two partner universities. This means students are free to progress to a wide range of UK universities, including many top 20 ranked and Russell Group institutions.

## How are they taught?

The programme offers a range of subject-related pathways, which give access to complementary subjects at university. Each pathway is made up of a number of modules, depending on which pathway you choose you might have a choice of modules, they may be all compulsory, or a mix of elective and compulsory modules.

## Assessment

Each module is assessed individually, with three assessment points through each term. Students will achieve an overall score based on all their individual module assessments.

## ABBHEY DLD IFP RESULTS 2020

	ABBHEY COLLEGE CAMBRIDGE	DLD COLLEGE LONDON	ABBHEY COLLEGE MANCHESTER
Overall average score (all pathways)	75%	72%	71%



# INTERNATIONAL FOUNDATION PROGRAMME PATHWAYS

	CAMBRIDGE	LONDON	MANCHESTER
Art		✓	
Biomedical Science		✓	
Business and Economics		✓	✓
Business Management & Economics	✓		
Computer Science & Mathematics		✓	
Creative Arts			✓
Engineering	✓	✓	✓
Environmental Science			✓
Fashion Management		✓	
Humanities	✓		✓
Mathematics & Economics		✓	



	CAMBRIDGE	LONDON	MANCHESTER
Medicine	✓	✓	✓
Science	✓		✓
Social Sciences		✓	
Sport			✓

### Special features

An exclusive agreement gives our Fashion Management and Art programme students the option to progress on to study at the London, Milan or Paris school of the prestigious Istituto Marangoni.

Our Medicine pathway provides a path to study Medicine. It is accepted by the University of Central Lancashire (UCLan), Aston University, and St George's University Grenada.





# BTEC

Available at DLD College London, Business and Technology Education Council Diplomas, known as BTECs offer an alternative route to study at university. They provide a more practical, real-world approach to learning alongside delivering a key theoretical background.

## BTEC COURSE DURATION AND START DATES

DURATION	STARTS EVERY	AVAILABLE AT
One year	September	London
Two year	September	London





“THE TWO YEARS I SPENT AT DLD WERE THE MOST PIVOTAL OF MY LIFE. THEY GAVE ME FREEDOM TO STUDY AND TO DO WHAT I REALLY ENJOYED.”

Elli from Iran  
BTEC student now studying Communication, Media, Culture & Politics at Oxford Brookes University.

### Why study BTECs?

In 2019, over a quarter of students accepted into UK university had studied BTECs. With their focus on work related learning and real world application, BTECs have grown in popularity because they allow students to develop practical skills related to the career they want to pursue, as well as understand the theory that underpins them.

DLD BTEC students have recently worked with Ticketmaster, the British Film Institute (BFI) and Harrods. Having the opportunity to engage with real world employers is an element that separates BTEC courses from traditional study. They are recognised in more than 100 countries and in recent years DLD graduates have moved on study at top UK universities, and also in Europe and North America.

### How are they taught?

DLD offers BTEC qualifications that are the equivalent to taking three (two year programme) or one A Level (one year programme) subjects. BTECs are divided into units, which cover specific areas of knowledge, skills, and understanding required by the particular sector or industry. They are a flexible qualification and can be taken alongside A Level.

### Assessment

BTECs offer students a variety of assessment methods which allows them to build on their strengths. Each course provides students with a mix of project based assessments which typically involve employer links, as well as written tests, online assessments and examinations.

### DLD COLLEGE LONDON BTEC RESULTS 2020

	D*D*D* - DDD	D*D*D* - MMM
% of students achieving	29%	90%

## BTEC PATHWAYS

	BUSINESS	MUSIC TECHNOLOGY	DIGITAL MEDIA PRODUCTION
DLD College London	✓	✓	✓





# ACADEMIC STUDIES WITH FOOTBALL /BASKETBALL TRAINING

Available at Abbey College Manchester, these exciting new courses are aimed at students who have a passion for football or basketball, and who want to continue training whilst they study.

## Why study Academic Studies with Football/Basketball Training?

This is a unique opportunity for students to gain qualifications for entry to university alongside intensive football or basketball training, which could lead to playing professionally or semi-professionally in the future. Football or Basketball training sessions are added to students' timetables without impacting on the core study requirements to gain their qualification.







**“PLAYING FOOTBALL WHILST STUDYING TAUGHT ME HOW TO MANAGE MY TIME EFFECTIVELY, AND HOW TO STUDY IN MY OWN TIME OUTSIDE OF THE CLASSROOM.”**

#### **Wojciech from Poland**

Academic Studies with Football Training student now studying Politics and International Relations at the University of Nottingham.



#### **How is it taught?**

Students will study on our GCSE, A Level or International Foundation Programme in the mornings and have football or basketball training sessions led by professional coaches in the afternoon.

#### **Assessment**

Assessment will follow the specifications of the academic course students choose to pursue, these are GCSE, A Level and International Foundation Programme.

#### **Facilities**

Our student athletes train at purpose-built professional standard training facilities. Training sessions are run by professional coaches. Basketball students train at the English National Basketball Centre alongside the Manchester Giants professional basketball team. For our students who want to take the next step, we organise regular trials with professional football and basketball teams.



# PRE-SESSIONAL PROGRAMME/ ACADEMIC PREPARATION COURSE

Our Pre-Sessional Programme (in Cambridge) and Academic Preparation Course (in London) are designed to raise students’ ability in general and subject specific English to enable them to join our academic programmes.

## PRE-SESSIONAL/ACADEMIC PREPARATION COURSE DURATION AND START DATES

DURATION	STARTS EVERY	AVAILABLE AT
One – three terms	January, April, September	Cambridge, London

Dependent on the level of language and academic abilities, our Pre-Sessional and Academic Preparation Programme can be taught for one, two or three terms. As well a strengthening English language and academic skills, we will prepare students to learn in a typical British classroom environment. This includes skill development in areas such as pair work, project work, independent reading, discussion work and team building. Physical Education (PE) and Personal Health and Social Education (PHSE) also form part of our preparatory curriculum.



**“LEARNING ENGLISH IS QUITE DIFFICULT COMPARED TO LEARNING AT HOME IN CHINA, BUT MY TEACHERS HAVE HELPED ME IN EACH SUBJECT AND IN SKILLS LIKE WRITING A GOOD REPORT OR ESSAY.”**

**Xiaonuo from China**

Pre-Sessional student now studying A Levels.





# BRITISH BOARDING SCHOOL EXPERIENCE (BBSE)

Spend a term studying the British curriculum and improving your English whilst boarding in the heart of one of the UK's most exciting cities.

Course benefits:

- Improve your written and spoken English.
- Live and study in one of three beautiful, historic and vibrant British cities.
- Study the globally recognised and admired British curriculum.
- High quality accommodation and pastoral support included.
- Study and live with ambitious students from around the world.



Whilst you study you will become a full member of our diverse student community, with access to our exciting extra-curricular programme of weekly clubs, sports and activities, evening lectures, and university preparation sessions.

Upon completion of your studies, you will receive a comprehensive academic report and completion certificate to take home. If you enjoy your time here, you can also choose to join the full GCSE, A Level or Foundation course and complete your university studies in the UK or at home.

BBSE COURSE DURATION AND START DATES

DURATION	STARTS EVERY	AVAILABLE AT
One Term	January, April, September	Cambridge, London, Manchester





# STUDY SUPPORT

**Our colleges offer personalised study support to every student at every level.**

This support ranges from bespoke support for students with special education needs and focused tutoring to help turn that A grade into an A\*, through to super-curricular and stretch programmes allowing students to explore higher level topics and develop their thinking outside of the curriculum.

Our study support is designed to help students achieve top grades and secure their place at a top university, it includes:



## UNIVERSITY PREPARATION

All three of our colleges offer university preparation programmes as standard, with a programme of preparation classes taught by experts in the subject area you plan to study at university.



## AFTER SCHOOL ACADEMIC ACTIVITIES

We offer a challenging programme of after school lectures, activities and revision classes. Sessions are delivered by tutors, former students, and selected guests from the academic and business worlds. These sessions often focus on contemporary developments, or on subjects not covered by the traditional syllabus.



## PERSONAL TUITION

Students have access to a dedicated personal tutor. They will help to guide you academically and to understand the routine of college life. Tutors provide regular updates on your progress to your parents and/or guardian.



## ACADEMIC ENGLISH

A Level, Foundation and BTEC students who do not speak English as their first language will attend up to five hours of Academic English lessons per week. These lessons will help improve your understanding of lesson content and context and to enable you to meet the English requirements of your first choice university.



## UCAS SUPPORT

Our Academic team will help guide you through the university admissions process, providing advice and guidance on university selection, completing your application form, and writing your personal statement.





**“MY TEACHERS HAVE SUGGESTED  
EXTRA WORK AND RESOURCES  
TO BROADEN MY KNOWLEDGE.  
THEY HELPED ME FIND  
UNIVERSITIES THAT OFFER MY  
COURSE AND PIN DOWN MY  
CHOICES FOR APPLICATION.  
I ALSO LEARNED ABOUT  
CAREERS AFTER UNIVERSITY.”**

**Yiping from China**

A Level student now studying Experimental Psychology at the University of Oxford.







# OUTSTANDING COLLEGES, OUTSTANDING LOCATIONS

Our three colleges are located in three of the UK's most exciting cities. Each college has its own unique personality, but we are united by the goal of providing a high quality British education to students from around the world.

## OUR COLLEGES AT A GLANCE



### Abbey College Cambridge

- Located in the heart of the world's most prestigious university city.
- Focus on traditional courses and subjects.
- Range of on and off-campus boarding options.
- Extensive extra-curricular programme.
- Quiet learning environment.



### DLD College London

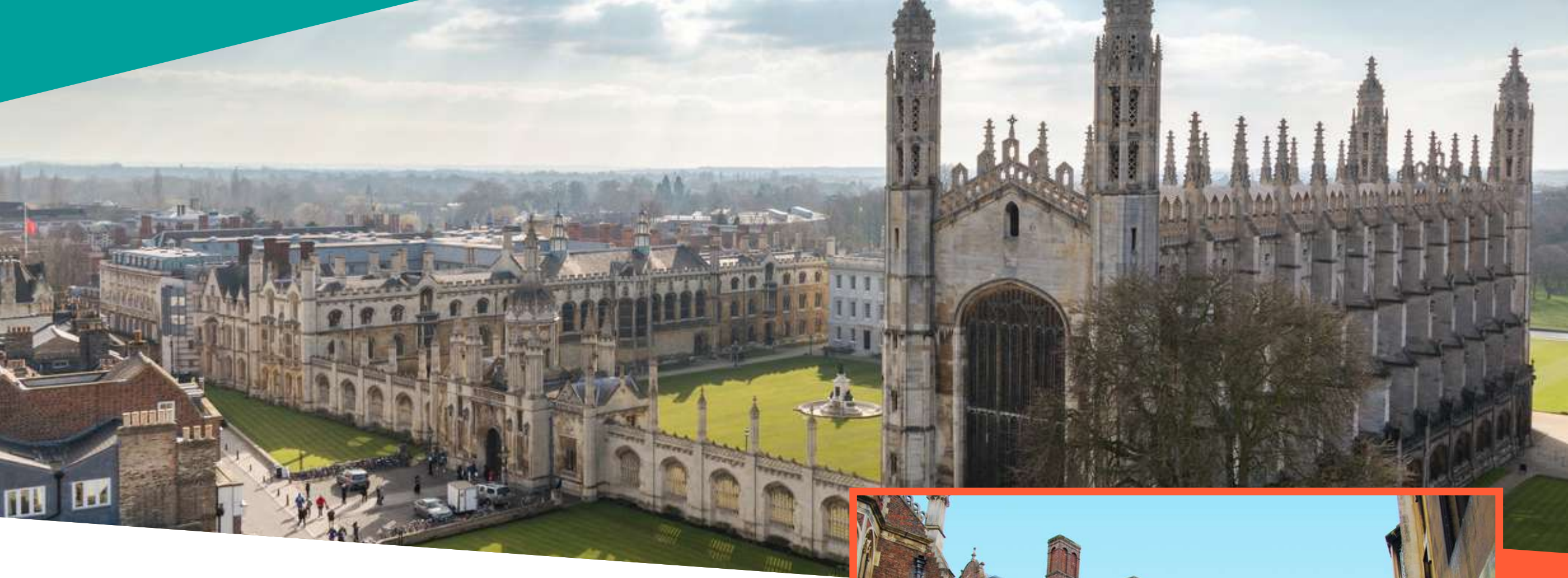
- Established as a top London College since 1931.
- Central London's only purpose built, on-campus boarding school.
- Wide range of course and subject options, focusing on creative, business and humanities subjects.
- Specialist preparation for top London and global universities.
- London offers unique and exciting cultural and academic experiences.



### Abbey College Manchester

- Small and friendly college community where more than one third of students are British.
- Manchester is one of the best British cities to live and study in.
- Pathway to world-class northern universities.
- Innovative and flexible courses.
- Experts in preparing students for medicine.





# CAMBRIDGE

## The world's most prestigious university city.

Cambridge is a unique fusion of the traditional and the modern, the everyday and the extraordinary, a small English city that has shaped our collective history and continues to influence our future.

For over 800 years the city has been home to the world-famous University of Cambridge. Consistently voted as one of the world's best, the university has produced countless ideas and discoveries that have changed our world, and boasts 120 Nobel laureates. Our students talk of being inspired by the academic atmosphere of the city, and we are able to offer them privileged access to university colleges, faculties and research institutes.

Away from studies, Cambridge is a small, quiet and safe city, it's also one of the UK's most beautiful places. There are enormous range of cultural, leisure and entertainment opportunities within the city and surrounding countryside.







# CAMBRIDGE HIGHLIGHTS



## PUNTING ON THE CAM

All year round you will find tourists and students taking to water to see the beautiful college 'backs', you can't call yourself a true Cambridge resident unless you've tried punting yourself!



## EXPLORE CAMBRIDGE COLLEGES

Many of the colleges that make up the university are world famous themselves, and you can explore their beautiful ancient buildings and libraries at your leisure.



## LECTURES AND DISCOVERIES

The university offers regular lectures, events, and festivals to the public throughout the year. Many of the lectures showcase the latest developments in their academic field.



## TAKE A STROLL IN THE BOTANIC GARDENS

Situated less than a kilometre from the college campus, the Botanic Gardens provides a haven of tranquillity in the heart of the city. It's also where the university conducts world-leading biological research.



## EXPERIENCE THE 'CAMBRIDGE PHENOMENON' FOR YOURSELF

From cutting edge start-ups to billion pound multinationals, despite its small size, Cambridge is an economic powerhouse that consistently ranks at the top of the UK's most desirable places to live and work. We use our industry links to offer our students internships and work experience at world-leading Cambridge companies such as ARM.





**“CAMBRIDGE HAS A VERY STRONG ACADEMIC VIBE. IT’S A PRIVILEGE TO STUDY HERE WITH THE CLEVEREST STUDENTS AND PROFESSORS IN THE WORLD.”**

Jacky from Taiwan

A Level student now studying Medicine at the University of Cambridge.







# ABBHEY COLLEGE CAMBRIDGE

## Your pathway to an elite university

Since its foundation in 1994, Abbey College Cambridge has developed a reputation for academic excellence. As Cambridge's leading international college, we are experts in teaching and supporting international students, and we do so in a community that is energised by the love of learning.

At Abbey College Cambridge students make friends from all over the world, share unforgettable experiences and go on to achieve amazing things together.

## Why Abbey College Cambridge?

- One of the UK's top performing international colleges.
- Unique 'Pre-Degree Diploma' programme helps students prepare for competitive courses.
- More than 60 weekly extra-curricular clubs and activities.
- Students excel in national and international academic competitions.
- House system encourages competition, fosters pride and builds friendships.



**"EVERY DAY OF YOUR  
STUDIES AT ABBEY  
COLLEGE CAMBRIDGE  
WE WILL CHALLENGE  
YOU TO ACHIEVE YOUR  
ABSOLUTE BEST."**

Dr Julian Davies, Principal





**“MY TEACHERS MADE ME FALL IN LOVE WITH MY CHOSEN SUBJECTS, EACH OF THEM HAD THEIR OWN WAY OF TEACHING, YET ALL OF THEM EXPLAINED THEIR TOPICS SO CLEARLY.”**

**Dariga from Kazakhstan**

A Level student now studying Management at the London School of Economics and Political Science.



**400+**  
**STUDENTS**

**47**  
**DIFFERENT**  
**NATIONALITIES**



**300+**  
**STUDENTS TO**  
**TOP 5 UNIVERSITIES**  
**SINCE 2010**



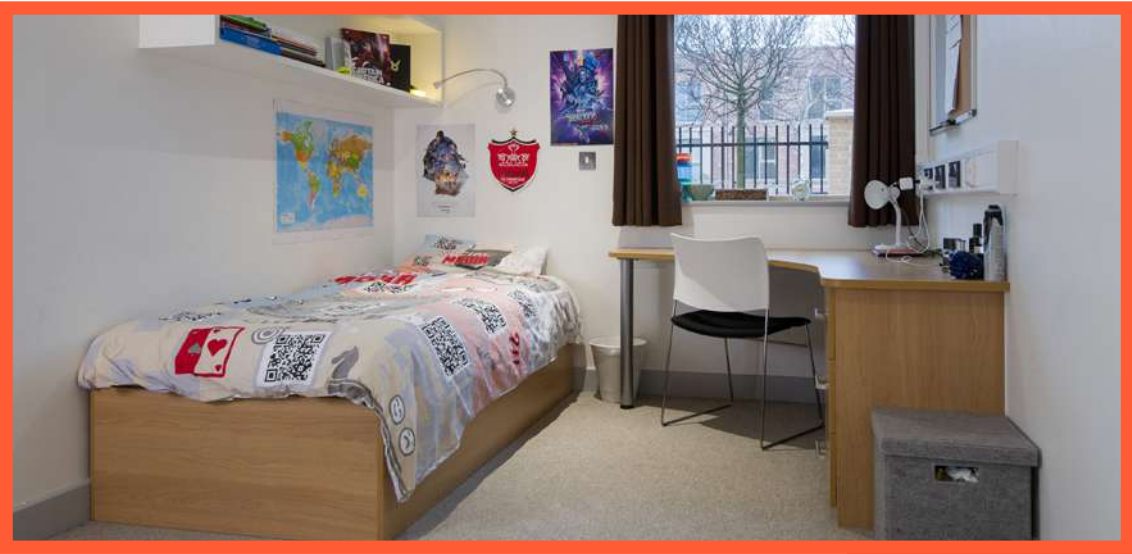


# BOARDING IN CAMBRIDGE

We offer more than 400 student bedrooms in our on and off campus boarding houses and with local host families.

## BOARDING HOUSE AND ROOM OPTIONS

ABBEY HOUSE	On-campus accommodation for students aged between 13-16 years. <b>Room options:</b> Standard Single Room, Superior Single Room, Standard Twin Room, Superior Twin Room. Full-board meals.
PURBECK HOUSE	Off-campus accommodation for students aged 16–21 years. 2 minute walk from college. <b>Room options:</b> Single Studio Room, Single Apartment, Twin Room. Full-board meals.
TRIPOS COURT	Off-campus accommodation for students aged 16-21 years. 5 minute walk from college. <b>Room options:</b> Standard Single Room, Superior Single Room. Full-board meals.
ORCHARD HOUSE	Off-campus accommodation for students aged 16-21 years. 15 minute walk from college. <b>Room options:</b> Standard Single Room, Superior Single Room. Half-board meals.
HOST FAMILY	Our host families provide an opportunity to experience British family life whilst studying. All our host families are located within the city of Cambridge and personally chosen by our Head of Accommodation. Full-board meals.







**“LIVING AT ABBEY COLLEGE CAMBRIDGE MEANS IMMERSING YOURSELF IN A MULTICULTURAL SOCIETY, YOU MAKE UNEXPECTED FRIENDS FROM PLACES YOU’VE PROBABLY NEVER HEARD OF.”**

**Ola from Nigeria**

A Level student now studying Medicine at St George’s, University of London.





# LONDON

## Exciting, entrepreneurial, iconic

One of the world's great cities, London is the UK's political, cultural and economic heart. It has been said before that a person who is tired of London is tired of life. Living and studying here you will find a world of experiences on your doorstep.

The city is filled with iconic sights, from Buckingham Palace and Big Ben to the London Eye and Tate Modern. It is home to more world-class museums, galleries and cultural institutions than any other European city.

London has been a global city since its foundation, and you will find it to be incredibly multicultural and diverse, a place where you will hear multiple different languages and can eat food from around the world on every street corner. The city also wears its history with pride, as centuries old buildings and monuments jostle next to glass and steel skyscrapers.







# LONDON HIGHLIGHTS



## SHOP TILL YOU DROP

You could spend days just shopping here, from high-class boutiques and department stores of Knightsbridge and Chelsea, to quirky fashion, food and craft markets like Camden, Borough and Portobello Road. You'll find something to suit every taste, and budget!



## EXPLORE THE CAPITAL BY BICYCLE

Rent one of the numerous 'Boris Bikes' and explore London's hidden and not so hidden paths, cycling is a great way to get around.



## RELAX IN GREEN SPACES

London is often called the world's greenest capital city, and its world-famous parks are great places to relax and unwind with friends at weekends or after lessons.



## TAKE IN SOME CULTURE

London is home to many world class museums, places which you can expand your knowledge and fire your imagination. The great news is that many of them can also be visited free of charge.



## EAT YOUR WAY AROUND THE WORLD

Even though you're studying in England, you can sample any kind of cuisine in London. The city has been at the heart of the UK's culinary revolution of recent years, and you'll find exciting street food on every corner. But don't forget to try some British staples like pie and mash and fish and chips whilst you're here.





**“STUDYING IN LONDON GIVES YOU GREAT OPPORTUNITIES, WHILST LEARNING THE WORLD’S MOST COMMON LANGUAGE, AND DLD GIVES YOU THE OPPORTUNITY TO BE RESPONSIBLE AND PREPARES YOU WELL FOR ADULT LIFE.”**

Lola from Russia

Foundation student now studying Fashion Management at Ravensborne University London.







# DLD COLLEGE LONDON



## An award-winning school in the heart of London

Much like the city that we call home, DLD College London is a fusion of the historic and the modern. Our history dates back to 1931, and we still hold close traditional values such as academic rigour, discipline, and exam success. We have combined these values with a focus on student wellbeing and personal development which means that DLD graduates are well-prepared for life after sixth form.

As central London's only on-campus boarding school, studying at DLD puts you in the heart of the city. Students wake up to the iconic London skyline, and our home on the South Bank puts some of London's best leisure, eating and entertainment experiences on your doorstep.

Our co-curricular programme of after school and weekend clubs make the most of our amazing location whilst ensuring that students remain safe and focused on their studies.

## Why DLD College London?

- Wide choice of courses and subjects.
- Experts in progression to top London and international universities, including the US.
- Central London's only on-campus boarding school.
- Winner of Independent Boarding School of the Year and Special Judges' Award for Boarding School of the Year at the 2020 Independent School of the Year Awards.
- Make the most of the amazing learning experiences London has to offer.



**“AT DLD WE FOCUS ON EACH STUDENT AS AN INDIVIDUAL, TEAMING HIGH QUALITY TEACHING WITH AWARD-WINNING PASTORAL AND LEARNING SUPPORT TO BUILD THE KNOWLEDGE AND CONFIDENCE THAT ENABLES OUR STUDENTS TO SUCCEED.”**



Irfan Latif, Principal





**“AT DLD I TRULY FELT LIKE I WAS AT HOME. THERE ARE MANY OPPORTUNITIES AROUND, WITH COMPETITIONS, VISITS, TALKS AND VISITING LECTURERS. THERE ARE ALSO MANY WORK EXPERIENCE OPTIONS AND OPPORTUNITIES TO FURTHER DEVELOP YOUR INTERESTS.”**

**Amirreza from Iran**

A Level student now studying Medicine at the University of Central Lancashire.



**300+**  
**STUDENTS**

**50**  
**DIFFERENT**  
**NATIONALITIES**



MORE THAN  
**60%**  
**OF STUDENTS JOIN A**  
**TOP-RANKED**  
**LONDON UNIVERSITY**





# BOARDING IN LONDON

DLD is the only school in Central London with boarding on site. Students live immediately above college in one of 250 ensuite bedrooms, or with local London host families

We want our boarders to feel that this is their 'home away from home' so the boarding house is split into different groups, which we call 'Huddles'. A 'Huddle' is a group of boarders organised by age, gender and floor, overseen by a designated houseparent. Boys and girls are housed on separate floors.

## ROOM TYPES

TWIN ROOM	Twin boarding room with a moveable wall that divides bedrooms, room has access to an ensuite washroom and shared common room.
PREMIER SINGLE ROOM	Single medium to large size boarding room with ensuite washroom and shared common room.
SINGLE ROOM	Single boarding room with ensuite washroom and shared common room.
HOST FAMILY	Single room with shared bathroom. Private bathroom may be available on request.







#### Every room includes:

- A bed with bedding and linen
- A washroom with shower, basin, and toilet
- A desk and chair
- Wi-Fi access
- Fresh linen and towels every week
- Access to a common room with kitchenette

All rooms are offered on a full-board basis, with students able to choose from a range of freshly cooked meals served daily in our Global Kitchen.



**“THERE ARE A LOT OF DIFFERENT CULTURES IN BOARDING SO IT’S ALWAYS INTERESTING. I FEEL WELL PREPARED FOR UNIVERSITY LIFE AS THE COLLEGE OPERATES MORE LIKE A CAMPUS AND I FEEL MUCH MORE INDEPENDENT NOW.”**

**Ievgen from Ukraine**

A Level student now studying Chemical Engineering at the University of Edinburgh.





# MANCHESTER

## An industrious past, a bright future

The birthplace of the modern world, Manchester is well known for its outstanding cultural, creative and sporting achievements. The city is often referred to as the 'capital of the north', Mancunians are famed for their independent spirit, pride, good humour and hospitality.

In recent years the city has experienced a cultural and economic boom, becoming the UK's third largest city by population, and second largest economy after London. Manchester is home to some of the best museums in the country, and it has long been considered to be a capital of music and sport.







# MANCHESTER HIGHLIGHTS



## KICK-OFF!

Manchester is mad about sport, and what better way to experience it than catch a game at one of Manchester's global football giants. Who is your team, Red or Blue? United or City?



## EUROPE'S BIGGEST STUDENT CITY

Centred around the world-renowned University of Manchester, the city is home to more international students than anywhere else.



## EXPLORE CHINATOWN

Manchester has the UK's biggest Chinese population outside of London, home to restaurants, bakeries and shops. The annual Chinese New Year Festival is one of the highlights of the city's cultural calendar.



## ESCAPE TO THE COUNTRY

Manchester is surrounded by some of the UK's most beautiful countryside, with the mountains, fells and pristine nature of the Lake District and Peak District National Parks a short journey from the city.



## TAKE TEA AT THE TOWN HALL

Manchester Town Hall is one of the city's most iconic buildings, built at the height of Britain's Imperial might, it is regarded as one of the finest examples of Neo-Gothic architecture in the world. Located in Albert Square, a short walk from our campus, the café inside makes a great place for a drink and snack on a break from your studies.





**“THE THING I ENJOYED MOST HAD TO BE THE ENVIRONMENT. IT WASN’T JUST THE BEAUTIFUL AREA THAT AMAZED ME, IT WAS THE PEOPLE. I HAVE MADE SO MANY FRIENDS THAT HAVE BECOME A SECOND FAMILY TO ME.”**

Salwa from Morocco

Foundation student now studying Medicine at St George's Grenada.







# ABBHEY COLLEGE MANCHESTER

## Exceptional learning in the heart of Manchester

For the past thirty years we've been proudly based in the heart of Manchester, in that time we've grown to showcase some of the city's best qualities; innovation, pragmatism, a sense of humour and a practical spirit.

We have welcomed thousands of students from around the world into our friendly college community, and we take pride in helping our students to achieve personal and academic development and move on to world-class universities, many of which, like our local University of Manchester, are located in our region.

We are the smallest of the three DLD colleges, and also have the highest proportion of British students studying with us, which makes classes and life in college an interesting and invigorating mix of local and international cultures.

## Why Abbey College Manchester?

- A small, friendly, welcoming community.
- British and International students integrate and learn together.
- Innovative and flexible course offering.
- A pathway to world-class northern universities.
- Experts at preparing students for medicine.

**“OUR TEACHING  
STYLE IS RIGOROUS,  
CREATIVE AND  
CENTRED ON  
THE INDIVIDUAL  
STUDENT. **EVERYONE  
CONTRIBUTES,  
EVERYONE IS  
APPRECIATED,  
EVERYONE IS  
WELCOME.**”**



Liz Elam, Principal





**“I REALLY ENJOYED THAT THE LESSONS WERE IN SMALL GROUPS, SO WE COULD GET MORE OUT OF THEM AND THE TEACHERS WERE REALLY FRIENDLY AND HELPFUL. THEY ALWAYS HAD TIME TO HELP ME, EVEN WHEN THEY WERE REALLY BUSY.”**

**Chanon from Thailand**

Foundation student now studying Management at the University of Manchester.



**200+**  
**STUDENTS**

**24**  
**DIFFERENT**  
**NATIONALITIES**



MORE THAN  
**60%**  
PROGRESS TO A  
**RUSSELL GROUP**  
UNIVERSITY EACH YEAR





# BOARDING IN MANCHESTER

Students under the age of 16 at the start of the academic year will live with one of our carefully selected local host families. A student will have their own large bedroom with a study desk, clothes storage and bathroom facilities. Breakfast, lunch and evening meals are provided every day, internet connection, water, electricity, gas, cleaning of room and laundry of clothes are all included.

For students aged 16 and over, our Riverside House residence is located within a 15-minute walk of the college and features 24 Hour security, secure entry and CCTV cameras, cycle storage, laundry facilities, onsite maintenance team, and weekly cleaning of kitchens. All student meals are provided on a full-board basis.

Live-in house parents supervise students to ensure their safety and wellbeing.







**Flats are divided into four, five, six and seven en-suite bedrooms. Each en-suite bedroom has the following features:**

- A ¾ size bed.
- Desk and chair.
- Wardrobe and drawers.
- Shelves/storage space.
- En-suite bathroom comprising toilet, wash-hand basin and shower.
- Curtains and blinds.
- Room contents insurance.

**Each flat has a large shared kitchen and living area comprising:**

- Dining table and chairs.
- Cooker (hob and oven).
- Microwave, kettle and toaster.
- Fridge/Freezer.
- Dishwasher.
- Pots, pans, plates and cutlery.
- Sofa and coffee table.
- Widescreen television.



**“RIVERSIDE HOUSE PROVIDED A SAFE ENVIRONMENT WHILST I STUDIED AND ALLOWED ME TO ENJOY MY SPARE TIME.”**

**Eric from China**

Foundation student now studying Computer Science at the University of Bristol.



# STUDENT DESTINATIONS 2020

Every year Abbey DLD students move on to join some of the world's most prestigious and highly ranked universities. Here is a summary of our 2020 student destinations:

## A LEVEL, TOP 20 DESTINATIONS

STUDENT	NATIONALITY/REGION	GRADES	COURSE
<b>1. University of Oxford</b>			
Haedam	Korean	A*A*A*	Engineering
Sid	British	A*A*A*	History
Yiping	Chinese	A*A*A*	Experimental Psychology
<b>2. University of Cambridge</b>			
Agustin	Uruguayan	A*A*A*A*	Natural History
<b>3. Imperial College London</b>			
Huy Vinh	Vietnamese	A*A*A*	Electronic and Electrical Engineering
Jiachun	Chinese	A*AA	Chemistry
Nazaninsadat	Iranian	A*A*A*A*	Mathematics
Victoria	Nigerian	A*A*A*	Chemical Engineering
Zhuoni	Chinese	A*A*A*A*	Computing
<b>4. University College London</b>			
Andi	Chinese	A*A*A	Chemistry
Bilqiss	Nigerian	A*AA	Engineering (Mechanical)
Chun Jin	Chinese	A*A*A*A*	Computer Science

STUDENT	NATIONALITY/REGION	GRADES	COURSE
Honghe	Chinese	A*AA	Economics
Guangshu	Chinese	A*AA	Mechanical Engineering
Grace	British	A*AA	Natural Sciences
Jiang	Chinese	A*A*A	Mathematics and Physics
Jiayi	Chinese	A*A*A*	Economics and Statistics
Jimin	Korean	A*A*A*	Management Science
Jin	Chinese	A*A*AA	Economics
Kristina	Belarussian	A*A*AA	Engineering (Electronic and Electrical)
Pak Hei	Korean	AAA	Biomedical Science
Phattarsaya	Thai	A*A*A	Applied Medical Sciences
Ruiyu	Chinese	A*A*A	Management Science
Ruohan	Chinese	A*A*A	Statistics, Economics and Finance
Tuo	Chinese	A*A*AA	Mathematics
Yijia	Chinese	A*A*A	Psychology with Education
Yiming	Chinese	A*A*A	History, Politics and Economics
Yu	Chinese	A*A*A	Mathematics and Physics
Yujie	Chinese	ABB	Archaeology
Yundong	Chinese	A*AA	Engineering (Mechanical)
Yunsi	Chinese	A*A*A*	Mathematics
Shinji	Japanese	A*AA	Information Management for Business
Tomiris	Kazakh	AAAB	History, Politics and Economics
Trieu Anh	Vietnamese	A*A*A*A*	Applied Medical Sciences
Xiang	Chinese	A*A*A*	Engineering (Mechanical)



STUDENT	NATIONALITY/REGION	GRADES	COURSE
Xiaowen	Chinese	A*ABB	Pharmacy
Xushing	Chinese	AAAB	Social Sciences with Quantative Methods
Zekai	Chinese	A*AA	Engineering (Electronic and Electrical)
Zixin	Chinese	A*AA	Information Management
Zhuoran	Chinese	A*A*A*	Chemistry
<b>5. London School of Economics and Political Science</b>			
Gelun	Chinese	AAB	Management
Jiang	Chinese	A*A*A*A*	Economics
Le Linh Chi	Vietnamese	A*A*AB	Economics
Monica	Cambodian	A*A*A*	Management
William	Uzbek	A*AAA	Management
Yao	Chinese	A*A*A*A*	Mathematics, Statistics and Business
Ye	Chinese	A*A*A*A*	Economics
<b>6. University of Edinburgh</b>			
Heng	Chinese	ABB	Accounting and Finance
Ievgen	Ukraine	A*A*AA	Chemical Engineering
<b>7. King's College London</b>			
Ailun	Chinese	BAB	Philosophy, Politics and Economics
Aizi	Chinese	AAA	Business Management
Alireza	Iranian	A*AB	Biomedical Science
Alramina	Kazakh	A*A*A*	Philosophy, Politics and Economics
Banghan	Chinese	A*AA	Mathematics with Management
Daniil	Russian	A*A*A*	Philosophy, Politics and Economics

STUDENT	NATIONALITY/REGION	GRADES	COURSE
Fatima	British	AAA	Biomedical Science
Jun Yi	Malaysian	A*A*A	Computer Science
Oleksandra	Ukranian	A*A*A*A	Information Management
Pier Giorgio	Swiss	A*BC	General Engineering
Vafa	Azerbaijani	A*A*A*	Psychology
Yixuan	Chinese	A*BB	General Engineering
Xiangmin	Chinese	C	Mathematics
<b>8. University of Manchester</b>			
Anushka	British	AA	Medicine
Awan	British	ABB	Religion and Theology
Beth	British	AAA	Midwifery
Bing	Chinese	A*A*A*A*	Computer Science
Christian	Malaysian	AAB	Architecture
Danial	Iranian	AAB	Pharmacy
Deniz	Iranian	AAA	Pharmacy
Eleanor	British	A*B	Politics, Philosophy and Economics
Elza	Latvian	AAA	Accounting and Finance
Fai Sin	Hongkonger	ABB	Electrical, Electronic and Mechatronic Engineering
Freddie	British	A*A*	Mathematics
Hanifi	Iranian	AAA	Pharmacy
Muhammed	British	AAB	Business Accounting
Jialun	Chinese	A*A*A*A*	Mathematics and Computer Science
Rasheeq	Malaysian	AAA	Chemical Engineering
Rizvi	British	AB	Pharmacy
Yifan	Chinese	A*A*A	Electrical and Electronic Engineering



STUDENT	NATIONALITY/REGION	GRADES	COURSE
<b>9. University of Warwick</b>			
Ai Xin	Malaysian	ABB	Biomedical Science
Changxin	Singaporean	A*A*AA	Economics
Luca	British	AAC	French and Economics
Ming	Chinese	A*AAA	Mathematics and Statistics
Tiang	Chinese	A*A*A	Economics
Yan	Chinese	A*A*AB	Accounting and Finance
Yijia	Chinese	A*A*A*B	Mathematics and Statistics
Xiangyu	Chinese	A*A*AA	Economics
Zhipu	Chinese	A*A*A*	Mathematics, Operational Research, Statistics, Economics (MORSE)
Zirui	Chinese	A*A*AA	Law
<b>10. University of Bristol</b>			
Jue	Chinese	AAB	Management
Sahasmeancheytheary	Cambodian	AAB	Cellular and Molecular Medicine
Sophie	British	AB	Ancient History
<b>11. University of Glasgow</b>			
Azgam	Kazakh	BBC	Aeronautical Engineering
Esther	British	A	Philosophy
<b>12. University of Birmingham</b>			
Muhammed	Iranian	AAB	Biomedical Sciences
<b>13. Queen Mary University of London</b>			
Alice	Italian	AAA	Neuroscience
Aaliyah	Nigerian	AAA	Chemical Engineering
Andrea	Slovakian	ABB	Film Studies and Drama
Danial	Nigerian	ABA	Politics and International Relations

STUDENT	NATIONALITY/REGION	GRADES	COURSE
Imangali	Kazakh	AAA	Computer Science and Mathematics
Jefri	Malaysian	ABB	Law
Yubei	Chinese	A*ABC	Mathematics with Finance and Accounting
Vaishnavi	Malaysian	ABB	Mathematics with Finance & Accounting
<b>15. University of Southampton</b>			
Anh Vu	Vietnamese	A*A*A	Computer Science with Artificial Intelligence
<b>16. University of York</b>			
Archie	British	BBB	Politics
Beth	British	A*A	Midwifery
Maddie	British	A*	Medicine
<b>17. Lancaster University</b>			
Olamide Ibrahim	Nigerian	A*BB	Mechanical Engineering
<b>18. Durham University</b>			
Diogo	Portuguese	A*A*A*A	English Literature
Khoi Nguyen	Vietnamese	AAA	Finance
Tianhao	Chinese	A*A	Mathematics
Xiaohan	Chinese	A*A*A*	Law
<b>19. University of Nottingham</b>			
Jiho	Korean	A*AAA	Pharmacy
<b>=20. University of Leeds</b>			
Mohammadamin	Iranian	A*AB	Civil Engineering
Rashad	Iranian	A*AA	Computer Science
<b>=20. University of Sussex</b>			
Negin	Iranian	AAA	Life Sciences



A LEVEL, OTHER TOP 50 DESTINATIONS

RANK	UNIVERSITY	NO OF STUDENTS
22	University of Liverpool	3
24	University of Exeter	10
=25	University of Aberdeen	2
=25	Newcastle University	5
27	Cardiff University	1
28	University of East Anglia	2
=30	University of Bath	3
=30	University of Reading	1
=30	University of St Andrews	1
=30	St George's, University of London	6
=35	Brighton and Sussex Medical School	1
=35	University of Surrey	2
=38	University of Essex	3
=38	University of Kent	1
=38	Royal Holloway, University of London	2
=43	City, University of London	9
=43	Loughborough University	4
=49	Aston University	1
= 49	Goldsmiths, University of London	2

OTHER A LEVEL DESTINATIONS

UNIVERSITY	
BIMM Institute	Courtauld Institute of Art
Lee Strasberg Institute, Los Angeles	Kingston University
Leeds Beckett University	Manchester Metropolitan University
New College of the Humanities	Norwich University of the Arts
Nottingham Trent University	Oxford Brookes University

UNIVERSITY	
Ravensbourne University London	Royal College of Surgeons in Ireland
University of the Arts London	University of Bradford
University of Buckingham	University of Central Lancashire
University of Hong Kong	University of Law
University of Waterloo, Canada	University of Westminster

INTERNATIONAL FOUNDATION PROGRAMME/BTEC, TOP 20 DESTINATIONS

STUDENT	NATIONALITY/REGION	GRADES	COURSE
7. King's College London			
Anna	Italian	66%	Biomedical Science
Chuyun	Chinese	79%	Mathematics with Management and Finance
Daniil	Russian	85%	Neuroscience
Haoyi	Chinese	80%	Mathematics with Management and Finance
Hauwa	Nigerian	74%	Biomedical Science
Ka Seng	Chinese	82%	Biomedical Science
Miao	Chinese	9 1%	Political Economy
Milana	Russian	85%	Economics
Lutskiy	Russian	80%	Neuroscience
Oui Yan	Indonesian	80%	Nutrition and Dietics
Sai	Indian	82%	Political Economy
Thanabodee	Thai	77%	Electronic Engineering
Xin	Chinese	77%	Classical Archaeology
Yixuan	Chinese	86%	Mathematics with Statistics
Yue	Chinese	87%	Psychology





STUDENT	NATIONALITY/REGION	OVERALL SCORE	COURSE
8. University of Manchester			
Weronika	Polish	80%	Management (Marketing)
Chanon	Thai	86%	Management (Marketing and Finance)
Kiwon	Korean	87%	Management
Ruohan	Chinese	83%	Mathematics
Weronika	Polish	85%	Management (Marketing)
Yuemei	Chinese	78%	Management (Accounting and Finance)
Yuhan	Chinese	74%	Fashion Management
Zhansaya	Kazakh	84%	Management
Zhengyi	Chinese	77%	Chemistry
Zhilin	Chinese	80%	Management (Marketing)
9. University of Warwick			
Camille	French	78%	Biomedical Science
10. University of Bristol			
San	Chinese	80%	Computer Science
Than Htet	Myanmarese	80%	Computer Science
Yuhao	Chinese	87%	Computer Science
Yupeng	Chinese	91%	Computer Science
12. University of Birmingham			
Wenying	Chinese	80%	Computer Science
Xiaoqian	Chinese	80%	Business Management
Zhiyuan	Chinese	79%	Business Management with Marketing
13. Queen Mary, University of London			
Aimen	Kyrgz	89%	Economics and Politics
Aung Kyaw	Myanmarese	76%	Computer Science
Hung Teck	Malaysian	75%	Robotics Engineering with Industrial Experience

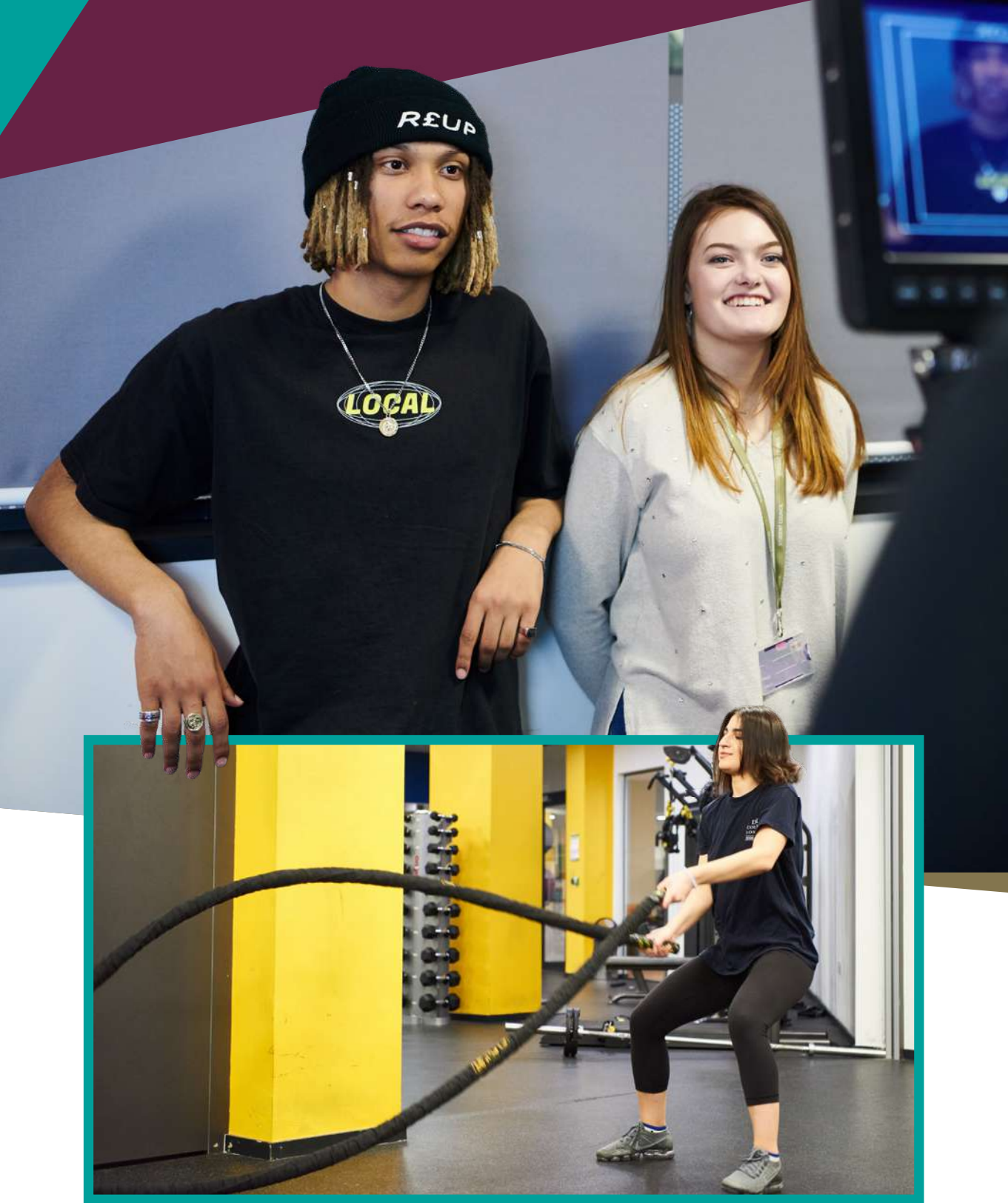


STUDENT	NATIONALITY/REGION	OVERALL SCORE	COURSE
Mostafa	Egyptian	82%	Mechanical Engineering with industry Experience
Saman	British	69%	Biomedical Engineering
Sophalin	Cambodian	76%	Business with Law
<b>14. University of Sheffield</b>			
Nguyen Anh	Vietnamese	79%	Software Engineering
Oluwafeyikemi	Nigerian	80%	General Engineering
<b>15. University of Southampton</b>			
Hong Sen	Malaysian	77%	Accounting and Economics
<b>16. University of York</b>			
Lauren	British	73%	Psychology
<b>18. Durham University</b>			
Citie	Chinese	81%	Accounting
Daniella	British	85%	Accounting and Finance
Faizan	Pakistani	85%	Marketing
Jiayu	Chinese	75%	Accounting
Zihao	Chinese	81%	Business and Management
<b>19. University of Nottingham</b>			
Asmau Aliyya	Nigerian	86%	Law
Mukhtar	American	80%	Civil Engineering
Wojciech	Polish	80%	Politics and International Relations
<b>20. University of Leeds</b>			
Asama	Iranian	80%	Law
Danial	British	DDM	Business Management
Davud	Azerbaijani	85%	Economics and Finance
Gyobe	Nigerian	80%	Accounting and Fianance



STUDENT	NATIONALITY/REGION	OVERALL SCORE	COURSE
Hongxi	Chinese	77%	Electronics and Communication Engineering
Jian Yang	Malaysian	74%	Banking and Finance
Liu	Chinese	80%	Electronics and Communication Engineering
Mohamad	Iranian	90%	Accounting and Finance
Pui Yuen	Hongkonger	81%	Electronic and Communication Engineering
Qui Hui	Chinese	85%	Accounting and Finance
Tianyijia	Chinese	86%	Civil Engineering
Weijie	Chinese	76%	Electronic and Electrical Engineering





INTERNATIONAL FOUNDATION PROGRAMME/BTEC,  
OTHER DESTINATIONS

RANK	UNIVERSITY
24	University of Exeter
25	University of Aberdeen
28	University of East Anglia
30	University of Bath
35	University of Surrey
=38	University of Essex
=38	Royal Holloway, University of London
43	City, University of London
=49	Aston University
=49	Bournemouth University
=49	Goldsmiths University of London
=49	Liverpool John Moores University
=49	University of West of England
=67	University of Brighton
=67	Coventry University
=67	University of Greenwich
=67	Manchester Metropolitan University
=67	Nottingham Trent University
=81	University of Central Lancashire
=81	University of East London
=81	Sheffield Hallam University
=81	University of Westminster





# TERM DATES AND FEES 2021/22

## 2021/22 TERM DATES\*

<b>Autumn Term</b>	Monday 6th September 2021 - Friday 10th December 2021 (Abbey College Cambridge and DLD College London)  Monday 13th September 2021 - Friday 16th December 2021 (Abbey College Manchester)
<b>Autumn Half Term</b>	Monday 18th October 2021 - Friday 22nd October 2021 (DLD College London)  Monday 25th October 2021 - Friday 29th October 2021 (Abbey College Cambridge & DLD College London)
<b>Spring Term</b>	Monday 3rd January 2022 - Friday 25th March 2022 (Abbey College Cambridge & DLD College London)  Monday 10th January 2022 - Thursday 31st March 2022 (Abbey College Manchester)
<b>Easter Holiday</b>	Monday 28th March 2022 - Friday 8th April 2022 (Abbey College Cambridge & DLD College London)  Monday 4th April 2022 - Friday 8th April 2022 (Abbey College Manchester)
<b>Summer Term</b>	Monday 11th April 2022 - Friday 24th June 2022 (Abbey College Cambridge)  Monday 11th April 2022 - Friday 1st July 2022 (DLD College London & Abbey College Manchester)
<b>Summer Half Term</b>	Monday 30th May 2022 - Friday 3rd June 2022 (All Colleges)

\*Term dates are for illustrative purposes only and liable to change. Please contact each college for final term dates.

## 2021/22 INTERNATIONAL TUITION FEES (All fees are yearly unless otherwise stated)

	ABBHEY COLLEGE CAMBRIDGE	DLD COLLEGE LONDON	ABBHEY COLLEGE MANCHESTER
GCSE Two Year Programme (Sep 2021 start)	£32,085	£31,930	£21,680
GCSE 18 Month Programme (First 6 months, Jan 2022 start)	£27,860	£27,705	£16,920
GCSE One Year Programme (Sep 2021 start)	£32,085	£31,930	£25,415
A Level Three Year Programme (Sep 2021 start)	-	-	£21,680
A Level Two Year Programme (Sep 2021 start)	£32,085	£31,930	£25,415
A Level 18 Month Programme (First 6 months, Jan 2022 start)	£27,860	£27,705	-
A Level One Year Programme (Sep 2021 start)	-	£31,930	-
International Foundation Programme Two Year (Sep 2021 start)	-	-	£21,680
International Foundation Programme 18 Month (First six months, Jan 2022 start)	-	-	£16,920
International Foundation Programme One Year (Sep 2021 start)	£32,085	£31,930	£25,415
BTEC 2/1 Year Programme (Sep 2021 start)	-	£31,930	-
Academic Studies with Football/Basketball (Sep 2021 start, including accommodation)	-	£31,930	£31,775
Pre-Sessional/Academic Preparation Programme (Per term, Jan/April/Sep start)	£9,115	£9,065	-
British Boarding School Experience September - December January - April April - June January - June	£16,685 £13,790 £10,610 £24,400	£17,880 £14,855 £11,670 £26,525	£13,775 £11,670 £8,485 £20,155



# 2021/22 EEA TUITION FEES

(All fees are yearly unless otherwise stated)

	ABBHEY COLLEGE CAMBRIDGE	DLD COLLEGE LONDON	ABBHEY COLLEGE MANCHESTER
GCSE Two Year Programme (Sep 2021 start)	£25,175	£25,055	£12,205
GCSE 18 Month Programme (First 6 months, Jan 2022 start)	£20,860	£20,780	£8,800
GCSE One Year Programme (Sep 2021 start)	£25,175	£25,055	£12,205
A Level Two Year Programme (Sep 2021 start)	£25,175	£25,055	£13,725
A Level 18 Month Programme (First 6 months, Jan 2022 start)	£20,890	£20,780	-
A Level One Year Programme (Sep 2021 start)	-	£25,055	-
International Foundation Programme Two Year (Sep 2021 start)	-	-	£13,650
International Foundation Programme 18 Month (First 6 months, Jan 2022 start)	-	-	£10,560
International Foundation Programme One Year (Sep 2021 start)	£25,175	£25,055	£15,915
BTEC 2/1 Year Programme (Sep 2021 start)	-	£25,055	-
Academic Studies with Football/Basketball (Sep 2021 start, excluding accommodation)	-	-	£31,775
Pre-Sessional/Academic Preparation Programme (Per term, Jan/April/Sep start)	£7,230	£7,185	-
British Boarding School Experience			
September - December	£16,685	£17,880	£13,775
January - April	£13,790	£14,855	£11,670
April - June	£10,610	£11,670	£8,485
January - June	£24,400	£26,525	£20,155





# BOARDING FEES

All rooms are offered on a full-board basis unless otherwise stated

## ABBEY COLLEGE CAMBRIDGE

BOARDING HOUSE & ROOM TYPE	YEARLY FEE
<b>Abbey House</b>	
Standard Single Room	£23,200
Superior Single Room	£24,700
Standard Twin Room	£18,000
Superior Twin Room	£19,100
<b>Purbeck House</b>	
Studio Room	£25,200
Apartment	£26,800
Twin Room	£19,600
<b>Tripes Court</b>	
Standard Single Room	£20,600
Superior Single Room	£22,100
<b>Orchard House</b>	
Standard Single Room (Half Board)	£17,000
Superior Single Room (Half Board)	£17,800
Host Family Room (Half Board)	£10,300 - £15,500



## DLD COLLEGE LONDON

ROOM TYPE	YEARLY FEE
Twin Room	£19,500
Premier Single Room	£27,900
Single Room	£25,400
Host Family Room (Breakfast or Half Board options)	£12,100 - £14,700

## ABBEY COLLEGE MANCHESTER

BOARDING HOUSE & ROOM TYPE	YEARLY FEE
Riverside House Room	£13,800
Host Family Room	£11,600





APPLY NOW

Simply scan the code to apply to study with us.







Abbey DLD Group of Colleges  
50 Queen Anne Street,  
London W1G 8HJ  
Tel: +44 (0) 20 7487 6000  
[www.abbeycolleges.co.uk](http://www.abbeycolleges.co.uk)



**α+ Alpha Plus**  
group

Abbey DLD Group of Colleges is part of the Alpha Plus Group Ltd.